

Customer :

customer

Customer part :

customer part

Comment :

Comment

S1=0.11

S2=0.6

Tmax=606

Tp S2=645.0

PI=0.16

HI=18

Sample =2935.4

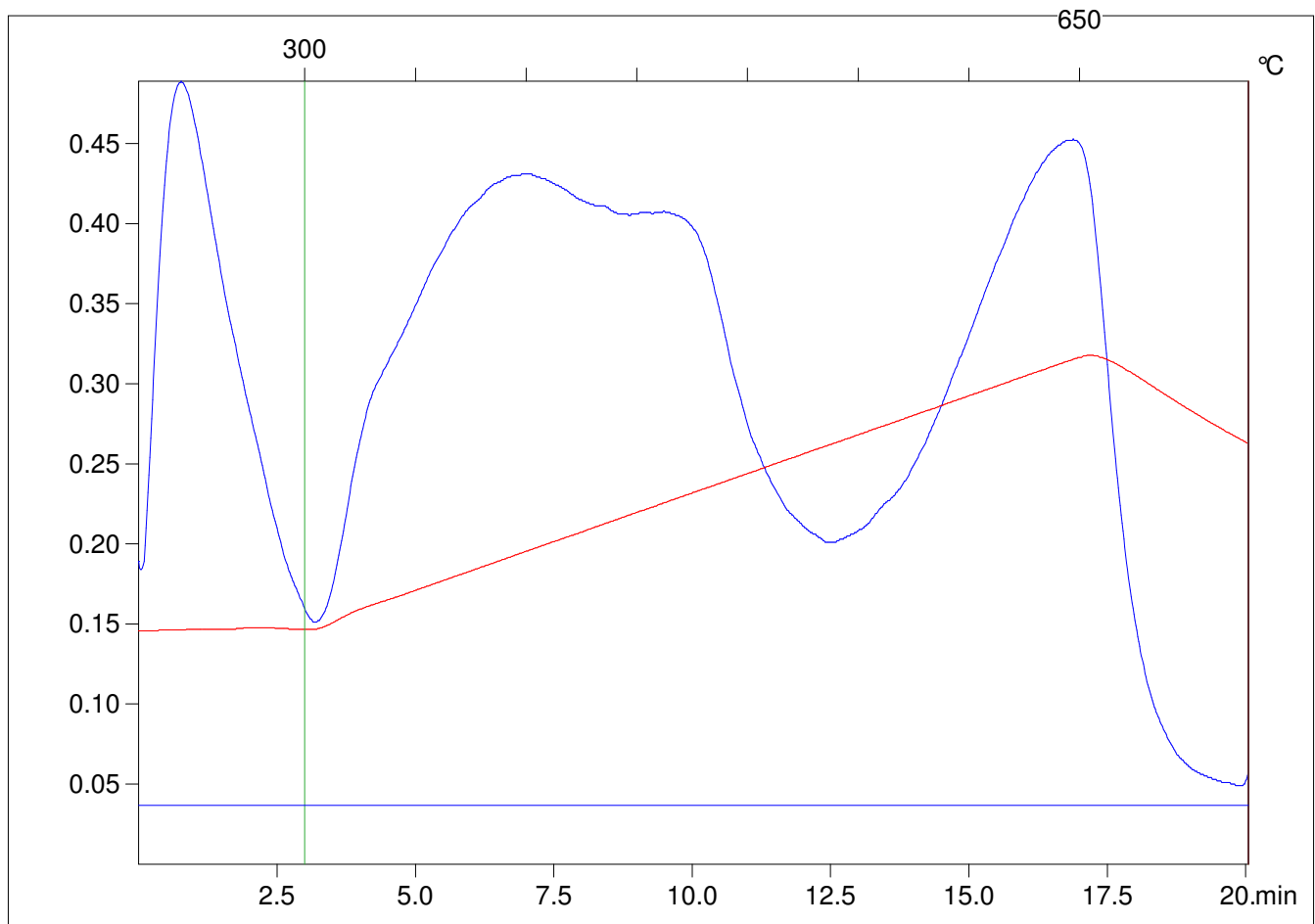
Method =Bulk Rock

Cycle=Basic

KFID(10*9)=1550

Qty =70.0

TOC=3.42



C:\VINC\PK130315\PK036.R00 : FID pyrolysis graphic

State

Pyro Status

Oxi Status